



# Hikvision Fever Screening Thermal Cameras

## GETTING YOUR BUSINESS BACK TO WORK !

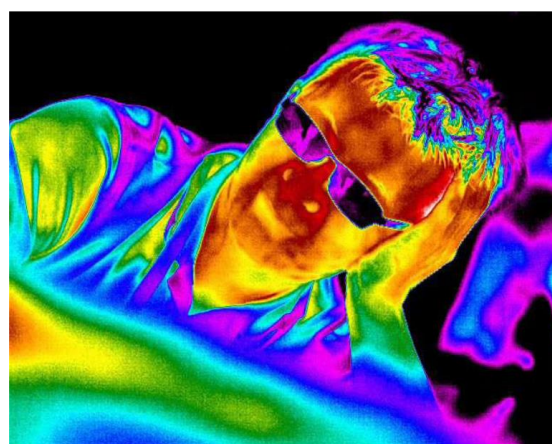
Following several enquiries from **Theatres** and **Commercial Organisations** recently, we have been asked about Fever Screening Cameras that may be used for Staff as well as Public screening as one control measure to allow working practises to return to normal.

### Thermal Principle

Any object with a temperature above absolute zero emits a detectable amount of infrared radiation.

A thermal camera senses such radiation and produces thermal images by converting the IR radiation into greyscale values and then matching the values to temperature values through an algorithmic model.

Based on Hikvision's proprietary advanced detectors and algorithms Hikvision's Fever Screening Thermal Cameras can achieve up to  $\pm 0.5^{\circ}$  C accuracy.



### Scenario 1 – Stage Door and General Staff Entry

Stage Door Keepers and Security Staff generally have enough to do without the added duty of operating a hand held unit every time someone walks through the door.

### Scenario 2 – Foyers and the Public Entry

There is already a general principle of bag searching within entertainment venues therefore crowds are already "managed" to form one or more single files.

### Scenario 3 – Contractors and Maintenance Staff

The units have built in facial recognition capability meaning your regular staff/ crew / maintenance contractors can be logged upon entry. The system can be integrated with Access Control Systems to allow entry and can be plugged into your local PoE Network to send email or sms messages to key management where access is denied.



## Answer – Ultra Face Recognition Rapid Deployment Terminal



- Completely Stand Alone or Connected to your Network or Access Control Systems
- Voice Prompts to alert when detecting abnormal temperatures
- Volt Free Outputs to control alarms / door access
- Fast temperature measurement mode: Detects face and takes temperature without identity authentication
- Can be connected via PoE to deliver email alerts or sms messages to key personnel



This is a self contained camera on a secure stand (or wall mounted if space available) and can be used in both scenarios.

All entrees face the screen and a voice prompt will allow or deny entry.

The system incorporates optional face recognition and can be used as an additional security measure at stage door or staff entrances.

Can integrate with Access Control Systems to open secure doors

Can be plugged into your local PoE Network to send email or sms messages to management where access is denied.

Click Here for the [Hikvision Application Video](#)

Several options are available to suit all applications and scenarios. Should you require any assistance or further advice then please do not hesitate to contact us

**CALL CTA FOR FURTHER INFORMATION – 01795 519 822**

**Email [david@ctafire.co.uk](mailto:david@ctafire.co.uk)**



## Technical

- Supports Vanadium Oxide uncooled sensor to measure target's temperature
- Temperature measuring range: 30 °C to 45 °C (86 °F to 113 °F), accuracy: 0.1 ° C, deviation: ± 0.5 °C
- Recognition distance: 0.3 to 2 m
- Fast temperature measurement mode: Detects face and takes temperature without identity authentication
- Multiple authentication modes are available: card and temperature, face and temperature, card and face and temperature, etc
- Face mask wearing alert: If the recognizing face does not wear a mask, the device will prompt a voice reminder. At the same time, the authentication or attendance is valid
- Forced mask wearing alert: If the recognizing face does not wear a mask, the device will prompt a voice reminder. At the same time, the authentication or attendance will be failed
- Displays temperature measurement results on the authentication page
- Triggers voice prompt when detecting abnormal temperature
- Configurable door status (open/close) when detecting abnormal temperature
- Transmits online and offline temperature information to the client software via TCP/IP communication and saves the data on the client software
- Face recognition duration < 0.2 s/User; face recognition accuracy rate ≥ 99%
- 50,000 face capacity, 50,000 card capacity, and 100,000 event capacity
- Suggested height for face recognition: between 1.4 m and 1.9 m
- Supports 6 attendance status, including check in, check out, break in, break out, overtime in, overtime out
- Watchdog design and tamper function
- Audio prompt for authentication result
- NTP, manually time synchronization, and auto synchronization
- Connects to external access controller or Wiegand card reader via Wiegand protocol
- Connects to secure door control unit via RS-485 protocol to avoid the door opening when the terminal is destroyed
- Imports and export data to the device from the client software

**CALL CTA FOR FURTHER INFORMATION – 01795 519 822**

**Email [david@ctafire.co.uk](mailto:david@ctafire.co.uk)**